

Ethnic Background Comparison

The table below compares 2009 Year 11 destinations by ethnic status. Data is collected about ethnic status using the classifications endorsed by the Commission for Racial Equality (now the Equality and Human Rights Commission) and used in the 2001 Population Census. Young people are invited to classify themselves.

Amounts shown as percentage (%)	White	Mixed	Asian or Asian British	Black or Black British	Chinese	Other ethnic groups	No Information	Total cohort
Full-time education	85.53	88.32	91.02	77.89	100.00	88.45	84.86	85.71
Full-time training (non-employed)	1.26	1.02	0.43	1.92	0.00	0.00	1.76	1.25
Full-time employment with training	3.98	1.52	0.43	0.96	0.00	3.85	3.52	3.71
Full-time employment without training	2.50	1.52	0.43	0.00	0.00	0.00	2.46	2.34
Voluntary and part-time activities	0.65	0.00	0.43	1.92	0.00	0.00	0.35	0.63
Active in the labour market	4.13	5.08	3.42	0.00	0.00	3.85	2.82	4.00
Not active in the labour market	0.62	0.00	1.28	3.85	0.00	3.85	1.41	0.71
Moved out of contact	0.36	0.00	0.85	0.96	0.00	0.00	0.35	0.37
No response	0.97	2.54	1.71	12.50	0.00	0.00	2.47	1.28
Percentage of cohort	87.11	2.93	3.48	1.55	0.31	0.39	4.23	
Total numbers	5,853	197	234	104	21	26	284	6,719

Definitions

- **Year 11 students/leavers** – young people who completed compulsory education in 2009.
- **Special/additional needs** – young people classified as having special/additional needs in line with the DCSF (formerly DfES) definition including those with and without specific statements of educational need and young people in both mainstream and special schools.
- **Full-time education** – have opted to continue full-time education at school or college (not always the school they were at previously).
- **Full-time training (non-employed)** – are on government supported training where they are not yet employed.
- **Employment with training** – have entered full-time employment with training leading to at least NVQ Level 2 or equivalent, or entails training which could be accredited towards an NVQ2.
- **Employment without training** – have entered full-time employment without training.
- **Voluntary and part-time activities** – are involved in full or part-time voluntary work, personal development opportunities, or part-time education or employment.
- **Active in the labour market** – are seeking employment, education or training, or have a place and are waiting to start.
- **Not active in the labour market** – because of illness, family responsibilities, pregnancy, custodial sentence or other reasons are not seeking employment, education or training.
- **Moved out of contact** – have moved out of the area and their destination cannot be determined.
- **No response** – did not respond to letters, phone calls and other follow up when Connexions staff tried to track these young people.

Contact details

For more copies of 'Class of 2009' please contact **Carol Smith** on **01865 328415** or **carol.smith@connexionsoxfordshire.com**.

Information about destinations nationally and by region can be found at **www.everychildmatters.gov.uk/resources-and-practice/IG00333/**. The latest report is called **Moving On –2008 Pathways taken by young people beyond 16**.

Connexions recognises diversity and is committed to equal opportunities.

Class of 2009

Year 11 Destinations



Oxfordshire

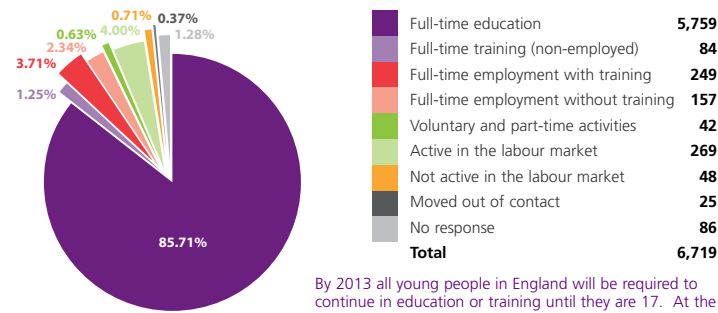


www.connexionsoxfordshire.com/
www.spired.com



Summary

This leaflet summarises the destinations of students in **Oxfordshire** completing Year 11 in 2009. The information is based on the findings of a survey conducted by Connexions staff during the Autumn of 2009. It does not include those completing Year 11 in independent schools.



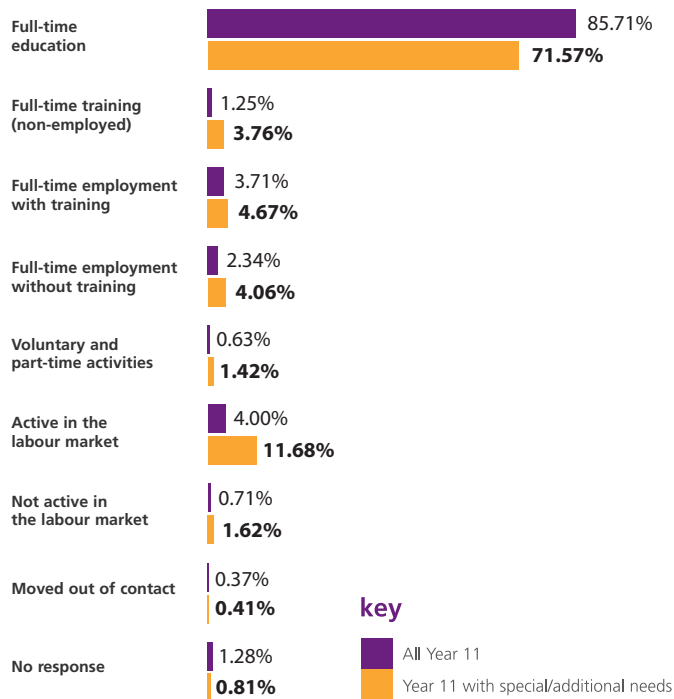
By 2013 all young people in England will be required to continue in education or training until they are 17. At the time of this survey 7.68% of those whose destination we know about were not participating, which compares with 11.95% in 2008.

6,719 students completed Year 11 in Oxfordshire schools in 2009.



Special/Additional Needs

This chart shows the destinations of Year 11 students with special/additional needs, and compares them with the whole cohort.



Occupations

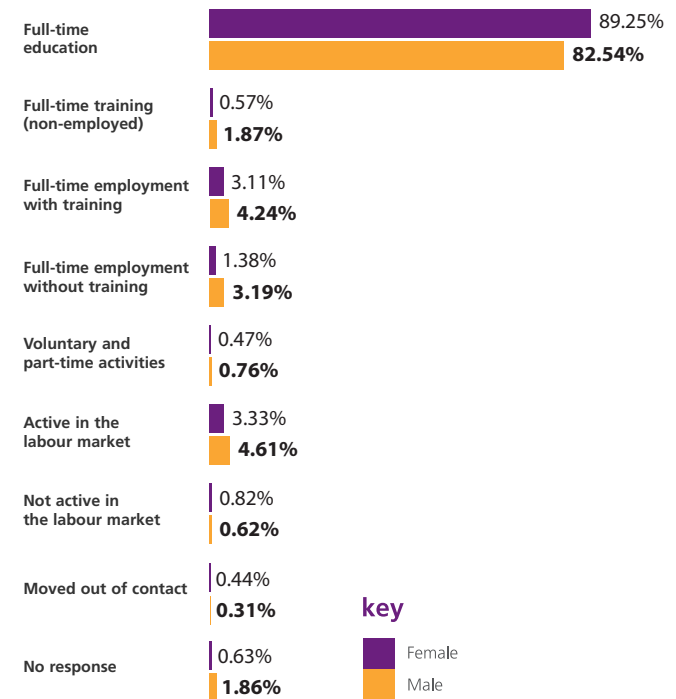
The table below shows the main types of work entered by Year 11 school leavers in 2009.

Occupation	total (%)	female (%)	male (%)
Sales	14.29%	21.12%	10.94%
Other elementary work	13.06%	12.42%	13.37%
Hairdressing and related occupations	10.20%	26.71%	2.13%
Skilled construction trades	8.98%	0.00%	13.37%
Catering	8.78%	11.80%	7.29%
Vehicle trades	7.96%	0.00%	11.85%

There continues to be a strong gender bias in the types of work chosen by school leavers. Young men completely dominate the skilled construction and vehicle trades while many more young women entered sales, hairdressing and catering than did young men.

Gender

The chart below compares destinations for female and male Year 11 students in 2009.



There are still some differences in the routes followed by young women and young men after Year 11. Young women are more likely to continue in full-time education after 16 (89.25% compared with 82.54%) while young men are more likely to be in training or work (9.30% compared with 5.06%).