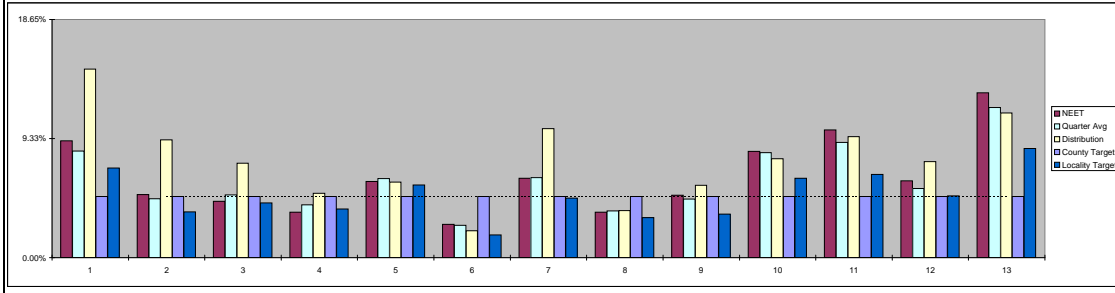


IYSS Monthly Data Pack
Summary of Information by Locality
July 2010 and Q1 2010-11
Q1=Quarter 1 (April, May, June) 2010/11



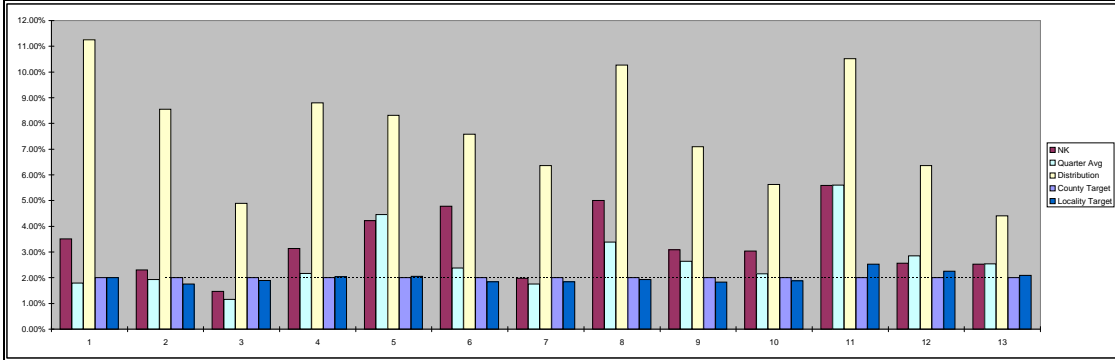
NEET by Service Area	Cohort	NEET Count	NEET %	Distribution
North	5341	298	5.54%	36.45%
South	4552	223	4.90%	27.46%
Central	3254	293	9.00%	36.08%
Total for Oxfordshire	13147	812		100.00%

NEET by Locality - July 2010 (LA NEET = %)	Cohort	NEET Count	NEET %	Distribution	Q1 2010-11	Connexions Locality Target 2010-11	Connexions County Target 2010-11
1 Banbury	1310	120	9.16%	14.8%	8.34%	7.0%	4.80%
2 Bicester/Kidlington	1522	75	4.93%	9.2%	4.62%	3.6%	4.80%
3 Wixey/Eynsham/Woodstock	1361	60	4.41%	7.4%	4.91%	4.3%	4.80%
4 Carterton/Burford/Chipping Norton	1148	41	3.57%	5.0%	4.14%	3.8%	4.80%
5 Didcot	805	48	5.96%	5.9%	6.18%	5.7%	4.80%
6 Thame/Wallington	649	17	2.62%	2.1%	2.53%	1.9%	4.80%
7 Abingdon/Bernsfield	1317	82	6.23%	10.1%	6.26%	4.7%	4.80%
8 Henley/Sonning Common/Woodcote/Wallingford	840	30	3.57%	3.7%	3.66%	3.1%	4.80%
9 Wantage/Farnborough/Grove	541	46	8.50%	6.7%	4.59%	3.6%	4.80%
10 Headington/Wheatley	758	63	8.31%	7.8%	6.23%	6.2%	4.80%
11 Cowley/Witley (SIS)	789	77	10.01%	9.5%	9.02%	8.5%	4.80%
12 North Oxford/Oxford/Botley	1014	61	6.02%	5.7%	5.60%	4.8%	4.80%
13 Oxford South East	713	92	12.90%	11.3%	11.77%	8.5%	4.80%
Total for Oxfordshire	13147	812	6.18%	100.0%			



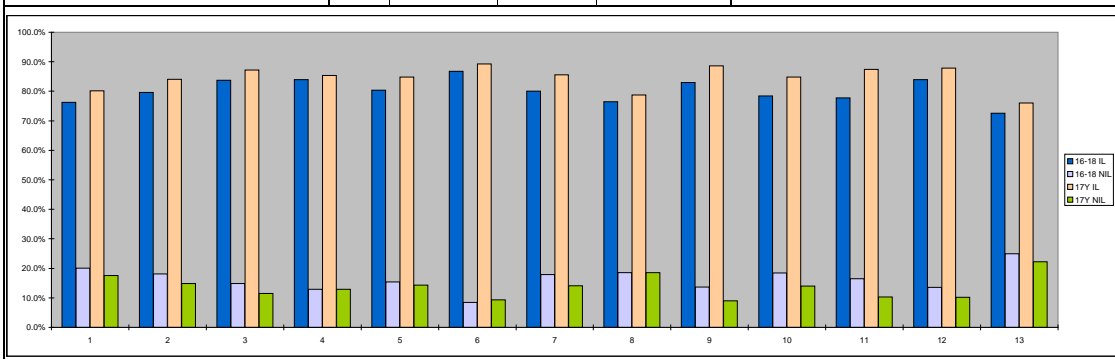
Not Known / Currency Expired by Service Area	Cohort	NK Count	NK %	Distribution
North	5341	137	2.57%	33.50%
South	4552	162	3.56%	36.81%
Central	3254	110	3.38%	29.89%
Total for Oxfordshire	13147	409		100.00%

Not Known / Currency Expired by Locality - July 2010 (LA NK = %)	Cohort	NK/Currency Expired Count	NK/Currency Expired %	Distribution	Q1 2010-11	Connexions Locality Target 2010-11	Connexions County Target 2010-11
1 Banbury	1310	46	3.51%	11.2%	1.80%	2.00%	2.0%
2 Bicester/Kidlington	1522	35	2.30%	6.6%	1.90%	1.76%	2.0%
3 Wixey/Eynsham/Woodstock	1361	20	1.47%	4.9%	1.15%	1.90%	2.0%
4 Carterton/Burford/Chipping Norton	1148	36	3.14%	8.6%	2.16%	2.04%	2.0%
5 Didcot	805	34	4.22%	8.3%	4.46%	2.06%	2.0%
6 Thame/Wallington	649	31	4.78%	7.6%	2.37%	1.84%	2.0%
7 Abingdon/Bernsfield	1317	28	1.97%	6.4%	1.75%	1.84%	2.0%
8 Henley/Sonning Common/Woodcote/Wallingford	840	42	5.00%	10.3%	3.38%	1.93%	2.0%
9 Wantage/Farnborough/Grove	541	29	5.36%	7.1%	2.64%	1.63%	2.0%
10 Headington/Wheatley	758	23	3.03%	5.6%	2.16%	1.88%	2.0%
11 Cowley/Witley (SIS)	789	43	5.45%	10.5%	5.60%	2.52%	2.0%
12 North Oxford/Oxford/Botley	1014	26	2.56%	4.4%	2.85%	2.25%	2.0%
13 Oxford South East	713	18	2.52%	4.4%	2.53%	2.09%	2.0%
Total for Oxfordshire	13147	409	3.11%	100.0%			



16-18 and 17Y In Learning / NIL by Service Area	16-18 In Learning	16-18 NIL	17Y In Learning	17Y NIL
North	81.9%	18.5%	84.2%	14.2%
South	81.3%	14.8%	85.4%	13.0%
Central	78.1%	18.4%	84.0%	14.2%

16-18 and 17Y In Learning (LI) / Not In Learning (NIL) by Locality	16-18 In Learning	16-18 Not In Learning (NIL)	17Y In Learning	17Y Not In Learning (NIL)	Connexions In Learning at 17Y Locality target 2010-11	Connexions In Learning at 17Y County target 2010-11
1 Banbury	76.3%	20.1%	86.1%	17.5%	88.1%	89.00%
2 Bicester/Kidlington	79.6%	18.1%	84.0%	14.9%	87.7%	89.00%
3 Wixey/Eynsham/Woodstock	83.7%	14.8%	87.2%	11.5%	89.6%	89.00%
4 Carterton/Burford/Chipping Norton	84.0%	12.0%	85.3%	13.0%	89.3%	89.00%
5 Didcot	80.6%	15.4%	84.9%	14.4%	88.8%	89.00%
6 Thame/Wallington	86.7%	9.5%	89.3%	9.3%	90.8%	89.00%
7 Abingdon/Bernsfield	80.0%	17.9%	85.6%	14.1%	90.6%	89.00%
8 Henley/Sonning Common/Woodcote/Wallingford	78.4%	16.6%	78.9%	18.5%	88.3%	89.00%
9 Wantage/Farnborough/Grove	83.0%	13.7%	88.7%	9.0%	89.0%	89.00%
10 Headington/Wheatley	78.4%	18.5%	84.9%	13.9%	87.8%	89.00%
11 Cowley/Witley (SIS)	77.8%	16.5%	87.4%	18.3%	88.2%	89.00%
12 North Oxford/Oxford/Botley	83.9%	13.5%	87.9%	10.2%	89.8%	89.00%
13 Oxford South East	72.5%	25.0%	76.0%	22.2%	88.0%	89.00%

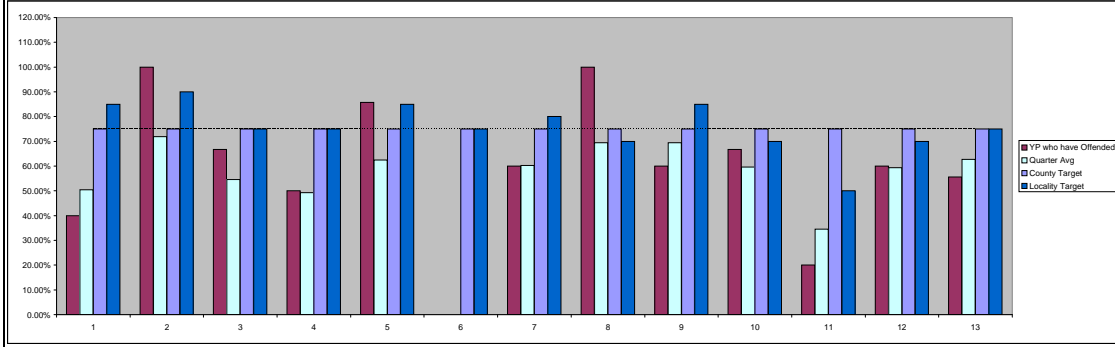


IYSS Monthly Data Pack
Summary of Information by Locality
July 2010 and Q1 2010-11
Q1=Quarter 1 (April, May, June) 2010/11



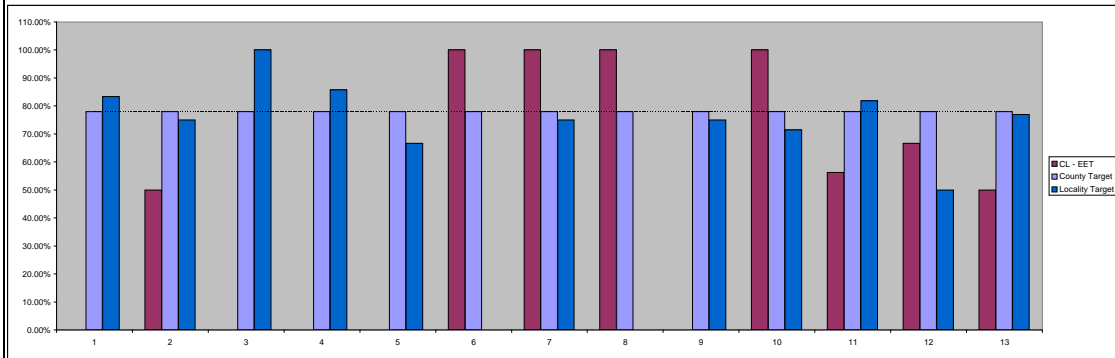
Post 16 YP who have offended by Service Area	YOS Count	YOS-EET	YOS-EET%
North	20	12	60.00%
South	22	16	72.73%
Central	33	16	48.48%
Total for Oxfordshire	75	44	58.67%

Post 16 YP who have offended by Locality	Young Offenders Count	Young Offenders-EET	Young Offenders-EET %	Q1 2010-11	Connexions Locality Target 2010	Connexions County Target 2010-11
1 Banbury	5	2	40.00%	50.40%	85.0%	75.0%
2 Bicester/Kidlington	3	3	100.00%	71.86%	90.0%	75.0%
3 Witney/Eynsham/Woodstock	6	4	66.67%	34.35%	75.0%	75.0%
4 Carterton/Burford/Chipping Norton	6	3	50.00%	49.21%	75.0%	75.0%
5 Didcot	7	6	85.71%	62.39%	85.0%	75.0%
6 Thame/Wallington	1	0	0.00%	0.00%	75.0%	75.0%
7 Abingdon/Berarsfield	5	3	60.00%	68.32%	80.0%	75.0%
8 Henley/Sonning Common/Woodcote/Wallingford	4	4	100.00%	68.44%	70.0%	75.0%
9 Wantage/Faringdon/Grove	5	3	60.00%	69.44%	85.0%	75.0%
10 Headington/Wheatley	9	6	66.67%	59.87%	70.0%	75.0%
11 Cowley/Milley (ISIS)	10	2	20.00%	34.52%	50.0%	75.0%
12 North Oxford/Cumnor/Botley	6	3	50.00%	59.37%	70.0%	75.0%
13 Oxford South East	9	5	55.56%	62.73%	75.0%	75.0%
Total	75	44				



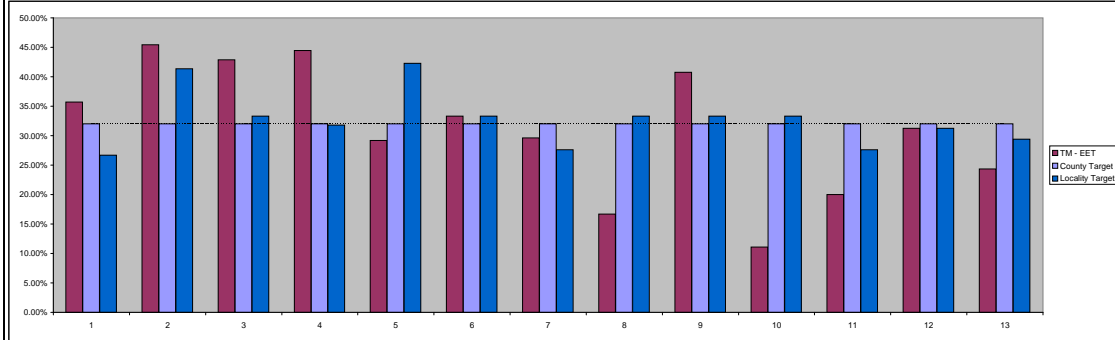
Y11(2009) Care Leavers by Service Area	Care Leaver-Count	Care Leaver-EET	Care Leaver-EET %
North	4	1	25.00%
South	4	3	75.00%
Central	24	14	58.33%
Total for Oxfordshire	32	18	56.25%

Y11(2009) Care Leavers by Locality	Care Leaver-Count	Care Leaver-EET	Care Leaver-EET %	Connexions Locality Target 2010	Connexions County Target 2010-11
1 Banbury	1	0	0.00%	83.33%	78.00%
2 Bicester/Kidlington	2	1	50.00%	75.00%	78.00%
3 Witney/Eynsham/Woodstock	0	0	N/A	100.00%	78.00%
4 Carterton/Burford/Chipping Norton	1	0	0.00%	85.71%	78.00%
5 Didcot	0	0	N/A	86.57%	78.00%
6 Thame/Wallington	1	1	100.00%	86.57%	78.00%
7 Abingdon/Berarsfield	1	1	100.00%	75.00%	78.00%
8 Henley/Sonning Common/Woodcote/Wallingford	1	1	100.00%	0.00%	78.00%
9 Wantage/Faringdon/Grove	1	0	0.00%	75.00%	78.00%
10 Headington/Wheatley	1	1	100.00%	71.43%	78.00%
11 Cowley/Milley (ISIS)	16	9	56.25%	81.82%	78.00%
12 North Oxford/Cumnor/Botley	3	2	66.67%	50.00%	78.00%
13 Oxford South East	4	2	50.00%	76.92%	78.00%
Total	32	18			



16-19 Teenage Mothers by Service Area	TM Count	TM-EET	TM-EET %
North	121	50	41.32%
South	91	29	31.22%
Central	106	23	21.70%
Total for Oxfordshire	317	102	32.18%

16-19 Teenage Mothers by Locality	TM Count	TM-EET	TM-EET %	Connexions Locality Target 2010	Connexions County Target 2010-11
1 Banbury	42	15	35.71%	27%	32.0%
2 Bicester/Kidlington	33	15	45.45%	41%	32.0%
3 Witney/Eynsham/Woodstock	28	12	42.86%	33%	32.0%
4 Carterton/Burford/Chipping Norton	18	8	44.44%	32%	32.0%
5 Didcot	24	7	29.17%	42%	32.0%
6 Thame/Wallington	6	2	33.33%	33%	32.0%
7 Abingdon/Berarsfield	27	8	29.63%	28%	32.0%
8 Henley/Sonning Common/Woodcote/Wallingford	6	1	16.67%	33%	32.0%
9 Wantage/Faringdon/Grove	27	11	40.74%	33%	32.0%
10 Headington/Wheatley	18	2	11.11%	33%	32.0%
11 Cowley/Milley (ISIS)	26	7	26.92%	28%	32.0%
12 North Oxford/Cumnor/Botley	16	5	31.25%	31%	32.0%
13 Oxford South East	37	9	24.32%	29%	32.0%
Total	317	102			



IYSS Monthly Data Pack
Summary of Information by Locality
July 2010 and Q1 2010-11
Q1=Quarter 1 (April, May, June) 2010/11

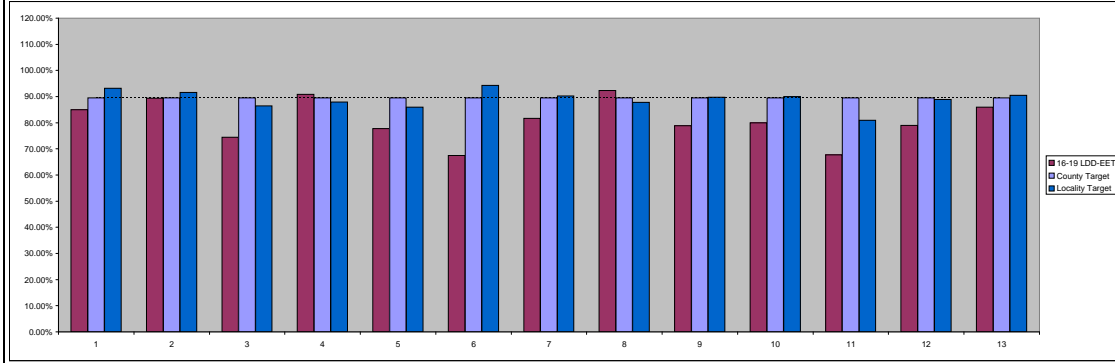


Integrated Youth Support Service
 www.oxfordshire.gov.uk



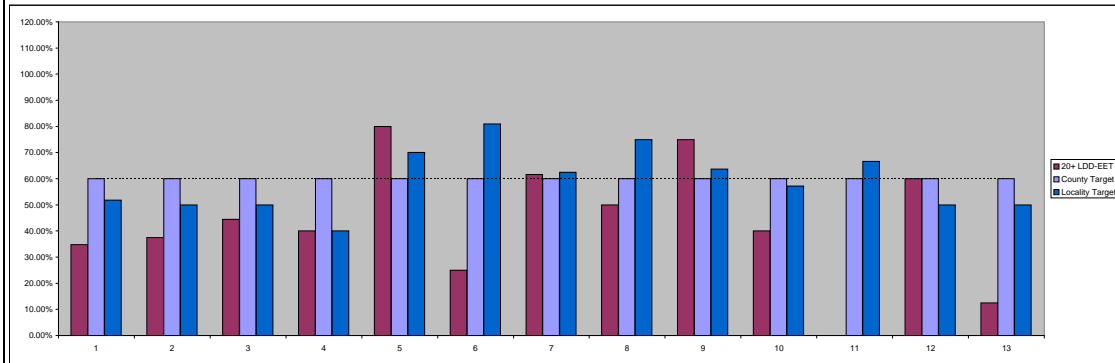
16-19 LDD by Service Area	LDD Count	LDD-EET	LDD-EET %
North	253	216	85.38%
South	298	236	79.19%
Central	178	147	82.30%
Total for Oxfordshire	728	594	81.59%

16-19 LDD by Locality	LDD Count	LDD-EET	LDD-EET %	Connexions Locality Target 2010	Connexions County Target 2010-11
1 Banbury	73	62	84.93%	93%	89.53%
2 Bicester/Kidlington	85	76	89.41%	92%	89.53%
3 Witney/Eynsham/Woodstock	51	38	74.51%	86%	89.53%
4 Carterton/Burford/Chipping Norton	44	40	90.91%	88%	89.53%
5 Didcot	72	58	77.78%	86%	89.53%
6 Thame/Wallingford	40	27	67.50%	94%	89.53%
7 Abingdon/Berkeley	93	76	81.72%	90%	89.53%
8 Henley/Sonning Common/Woodcot/Wallingford	39	36	92.31%	88%	89.53%
9 Wantage/Faringdon/Grove	52	41	78.85%	90%	89.53%
10 Headington/Wheatley	60	48	80.00%	92%	89.53%
11 Cowley/Itley (ISIS)	31	21	67.74%	81%	89.53%
12 North Oxford/Cumnor/Botley	38	30	78.95%	89%	89.53%
13 Oxford South East	50	43	86.00%	90%	89.53%
Total	728	594			



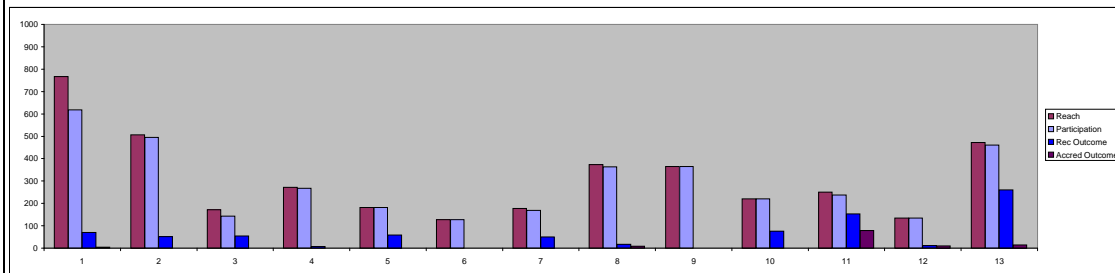
20+ LDD by Service Area	LDD Count	LDD-EET	LDD-EET %
North	45	17	37.78%
South	42	21	50.00%
Central	24	8	33.33%
Total for Oxfordshire	111	46	41.44%

20+ LDD by Locality	LDD Count	LDD-EET	LDD-EET %	Connexions Locality Target 2010	Connexions County Target 2010-11
1 Banbury	23	3	13.04%	52%	60.00%
2 Bicester/Kidlington	8	3	37.50%	50%	60.00%
3 Witney/Eynsham/Woodstock	9	4	44.44%	50%	60.00%
4 Carterton/Burford/Chipping Norton	5	2	40.00%	40%	60.00%
5 Didcot	5	4	80.00%	70%	60.00%
6 Thame/Wallingford	18	4	22.22%	81%	60.00%
7 Abingdon/Berkeley	13	8	61.54%	63%	60.00%
8 Henley/Sonning Common/Woodcot/Wallingford	4	2	50.00%	75%	60.00%
9 Wantage/Faringdon/Grove	4	3	75.00%	64%	60.00%
10 Headington/Wheatley	10	4	40.00%	57%	60.00%
11 Cowley/Itley (ISIS)	1	0	0.00%	67%	60.00%
12 North Oxford/Cumnor/Botley	5	3	60.00%	50%	60.00%
13 Oxford South East	8	1	12.50%	50%	60.00%
Total	111	46			

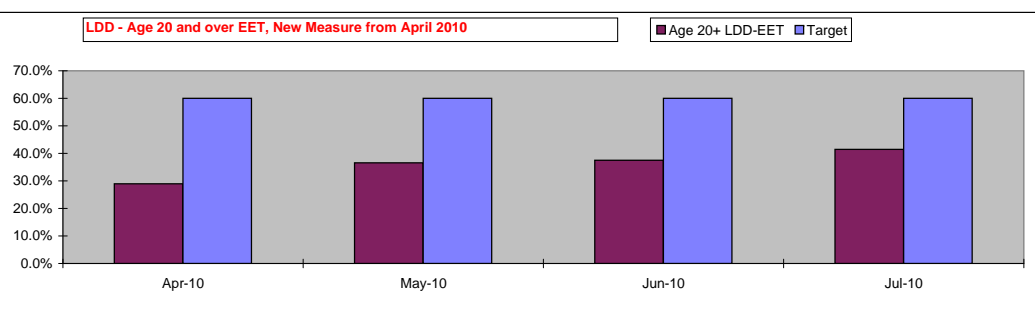
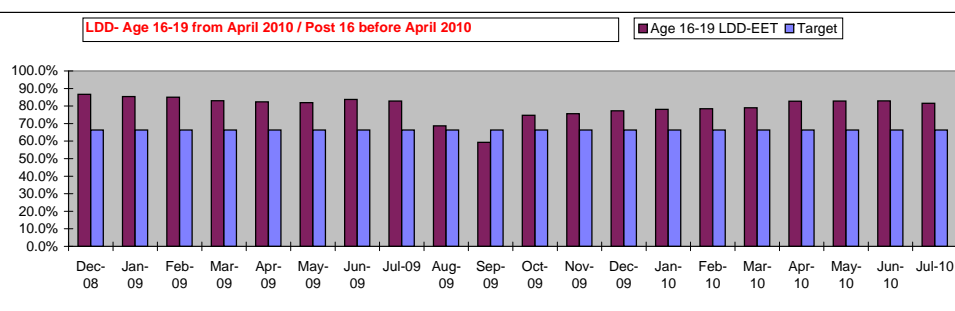
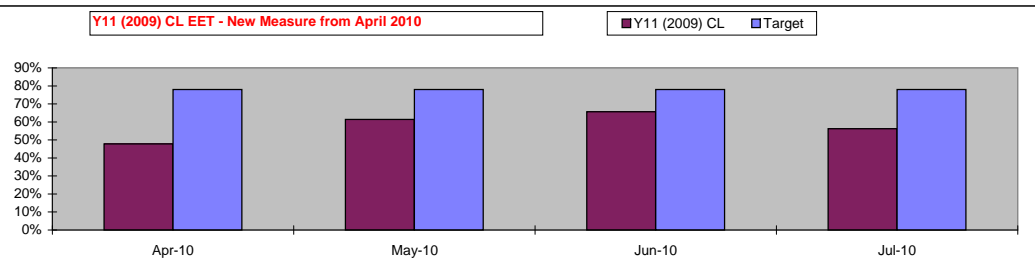
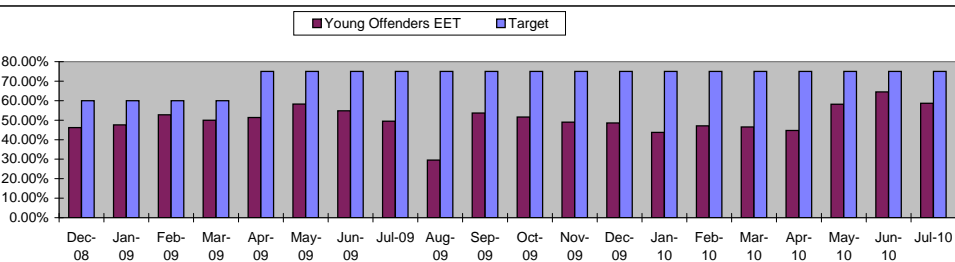
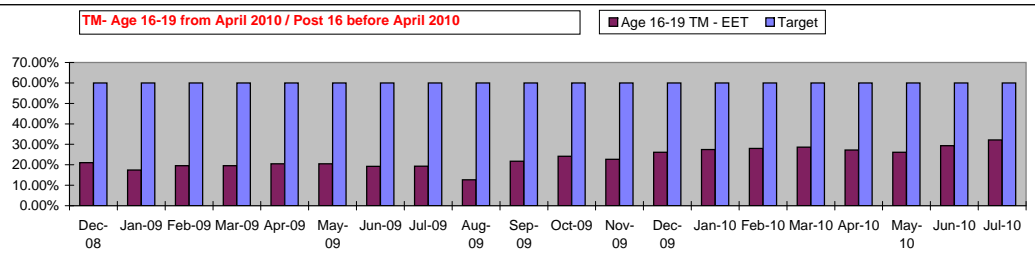
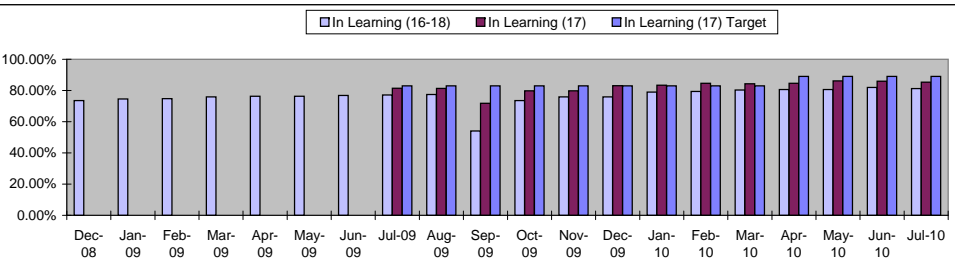
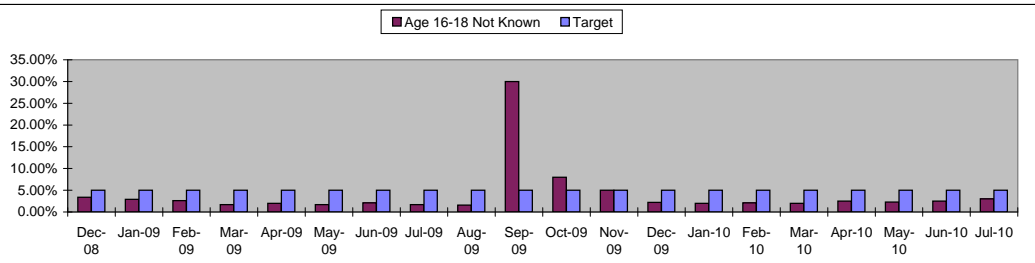
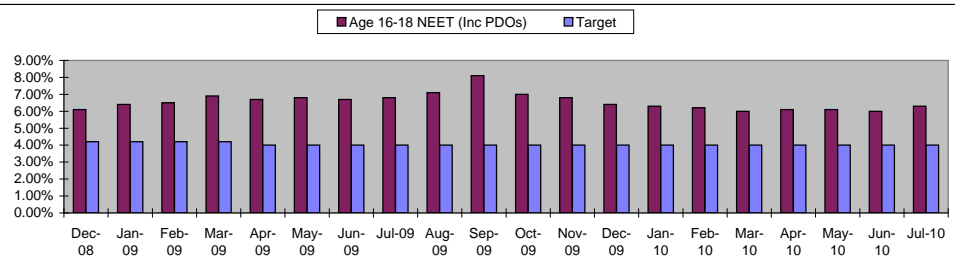


Youth Work by Service Area - Updated 01-08-2010	Reach	Participation	Recorded Outcome	Accredited Outcome	Volunteers	Decision Making	Attendance
North	1715	1524	183	4	59	28	8811
South	1225	1206	126	8	61	20	5942
Central	1078	1053	502	102	23	54	8168
Total for Oxfordshire	4019	3783	811	114	140	100	22909

Youth Work by Locality	Reach	Participation	Recorded Outcome	Accredited Outcome	Volunteers	Decision Making	Attendance
1 Banbury	787	618	70	4	13	0	4149
2 Bicester/Kidlington	606	495	51	0	21	15	2830
3 Witney/Eynsham/Woodstock	171	143	55	0	7	4	784
4 Carterton/Chipping Norton/Burford	272	268	7	0	15	7	1048
5 Didcot	181	181	59	0	0	0	734
6 Thame/Wallingford	128	128	0	0	0	0	722
7 Abingdon/Berkeley	178	169	50	0	12	0	1274
8 Henley/Sonning Common/Woodcot/Wallingford	373	363	7	8	0	0	1841
9 Wantage/Grove/Faringdon	365	365	0	0	49	20	1371
10 Headington/Wheatley	221	221	76	0	0	0	1928
11 Isis	250	258	153	78	1	32	1448
12 North Oxford/Cumnor/Botley	135	134	12	10	0	0	1107
13 Oxford South East	473	460	261	14	22	22	3673
Current Figures	4019	3783	811	114	140	100	22909
Current %	7.8%	6.6%	9.5%	1.3%			
Oxfordshire 13-19 population 2010-11 - 56819							
End of Year 2010-11 Target for Youth Service	25% (14294)	15% (8522)	60% (5113)	30% (2556)			



K - NEET - Not in Education, Employment or Training
E - NK - Not Known
Y - EET - in Education, Employment or Training
W - CL - Care Leavers
O - YOS - YP who have Offended
R - TM - Teenage Mothers
D - LDD - Learning Disability and Difficulty



- 1 **NEET (Not in Education, Employment or Training)** - % of YP in NEET (including PDOs)
- 2 **Not Known** - % of YP not known or can not be contacted
- 3 **Age 16-18 and 17Y In Learning (IL) and Not in Learning (NIL)**
- 4 **Teenage Mothers (TM) EET** - % of Teenage Mothers EET against the TM cohort and the Target
- 5 **YOS - Post 16** Young People who have offended and are EET
- 6 **Y11 (2009) CL EET** - YP who left the school in 2009 and were Care Leaver (CL)
- 7 **Age 16-19 YP LDD and EET**
- 8 **Age 20 and over YP LDD and EET**

July 2010 - Summary	Targets 2010-11	
	Connexions	LA
NEET	6.3%	4.80%
Not Knowns	3.0%	2.00%
17Y - In Learning	85.3%	89.00%
Care Leavers - EET	56.0%	78.00%
YP who have offended - EET	58.7%	75.00%
Teenage Mothers - EET	32.2%	32.00%
LDD 16-19 - EET	81.6%	90.00%
LDD 20+ - EET	41.4%	60.00%

